



DMG10768S150_01W

15.0 Inches, 1024xRGBx768, 16.7M Colors, UART LCM



Record of Revision

Revise Date	Content
2010-07-01	First Edition
2011-11-01	Update to 2 nd version

● Display

Item	Parameter	Description
Color	16.7M (16777216) colors	24 bit color 8R8G8B
Active Area (A.A.)	304.1mm (W) x228.1mm (H)	1024x768
View Area (V.A.)	307.4mm (W) x231.3mm (H)	1024x768
Resolution	1024x768	90° rotation by using command 0xE0 (768x1024)
Backlight	CCFL	-
Brightness	320 nit (DMG10768S150_01WN)	
	220 nit (DMG10768S150_01WT)	

● Voltage & Current

Item	Conditions	Min	Typ	Max	Unit
Power Voltage	-	12.0	15.0	26.0	V
Operation Current	VCC = +15V, Backlight on	-	940	-	mA
	VCC = +15V, Backlight off	-	260	-	mA

Recommended power supply: 15V 2A DC

● Reliability Test

Item	Conditions	Min	Typ	Max	Unit
Working Temperature	60%RH at 15V voltage	-20	25	70	°C
Storage Temperature	-	-30	25	85	°C
Working Humidity	25°C	10%	60%	90%	RH
Protective Paint	-	-	Yes	-	-
Aging Test	-	-	72	-	H

● Interface

Item	Conditions	Min	Typ	Max	Unit
Baudrate	I/O0=1 (High Voltage)	1200	115200	691200	bps
	I/O0=0 (Low Voltage)	-	921600	-	bps
	High-speed Download	-	6.25	12.000	Mbps
Output Voltage (TXD, BUSY)	Output 1, Iout = 1mA	-8.0	-5.0	-4.0	V
	Output 0, Iout = -1mA	4.0	5.0	8.0	V
Input Voltage (RXD, I/O0)	Input 1, Iin = 1mA	-15.0	-5.0	0.7	V
	Input 0, Iin = -1mA	2.2	5.0	15.0	V
Buffer	-	-	24	-	Frame
Interface		8N1, RS232			
Socket		8Pin_2.54mm			
USB		Yes (XRV1410)			
SD Slot		None			

● Memory

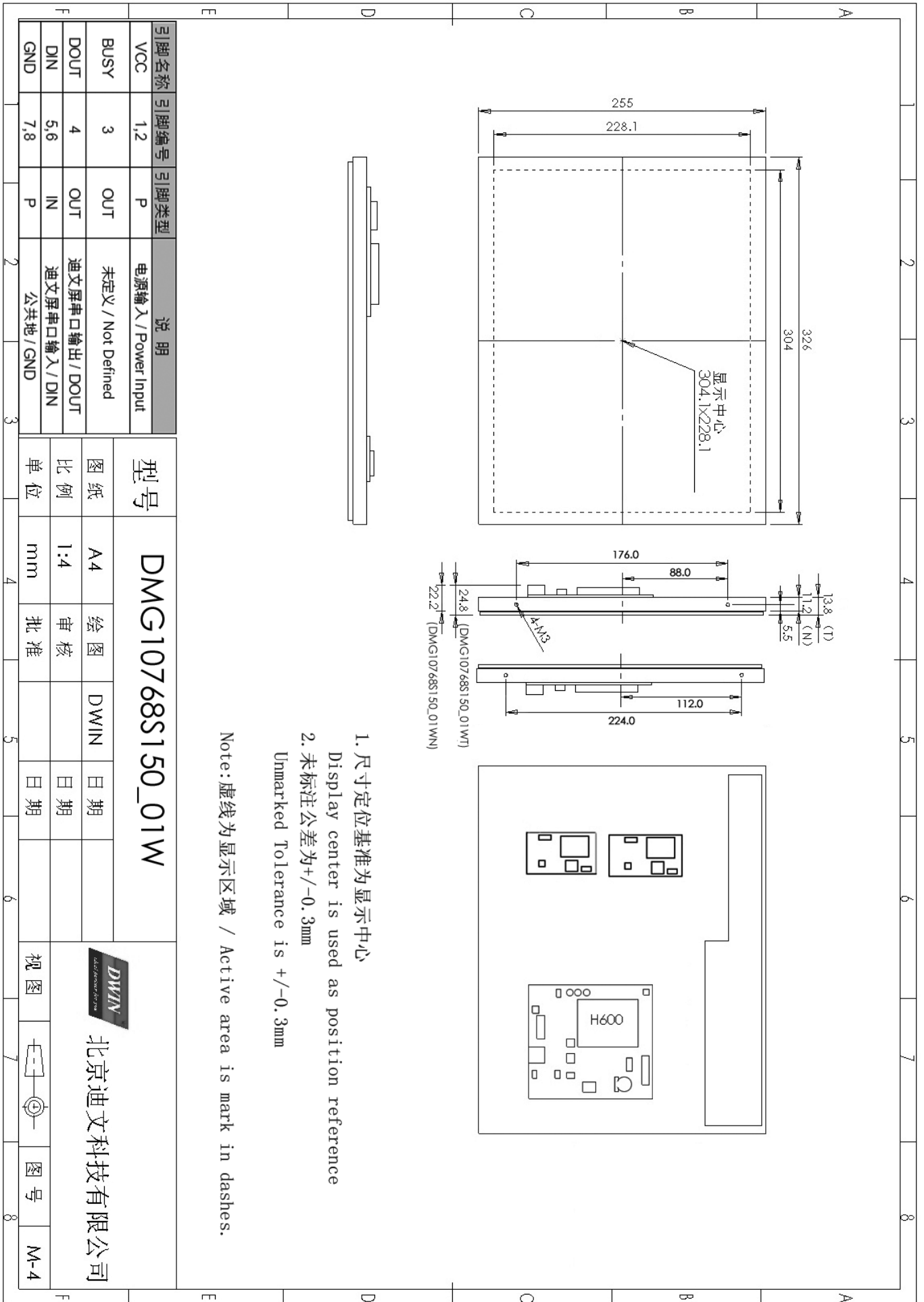
Item	Parameter	Min	Typ	Max	Unit
Flash	Space of Font	-	32	-	MB
	Picture Storage (384MB)	-	-	118	Pcs
	Picture Storage (3GB)	-	-	1242	Pcs
	User Memory	0	-	32	MB
RAM	Serial Access Memory Space	-	80	-	KB

● Command Set & Peripheral

Command Set & Peripheral	
Command Set	HMI Command Set H600
Peripheral	DMG10768S150_01WN : RTC, Buzzer DMG10768S150_01WT : 4-wire resistance touchscreen, RTC, Buzzer

● Packing Capacity & Dimension

Dimension				
Dimension	346.5 (W) x 225.7 (H) x 22.2 (T-WN) / 24.8 (T-WT)mm			
Net Weight	1150g (DMG10768S150_01WN) 1350g (DMG10768S150_01WT)			
Packing Capacity				
Model	Size	Layer	Quantity/Layer	Quantity(Pcs)
Carton1	220mm(L)x160mm(W)x47mm(H)	-	-	-
Carton2	250mm(L)x200mm(W)x80mm(H)	-	-	-
Carton3	320mm(L)x270mm(W)x80mm(H)	-	-	-
Carton4	450mm(L)x350mm(W)x300mm(H)	-	-	-
Carton5	600mm(L)x450mm(W)x300mm(H)	-	-	-



1. 尺寸定位基准为显示中心
 Display center is used as position reference

2. 未标注公差为 $\pm 0.3\text{mm}$
 Unmarked Tolerance is $\pm 0.3\text{mm}$

Note: 虚线为显示区域 / Active area is mark in dashes.